

Hello — and thanks for taking a look at my work!

My name is Rich Kurz and I am an experienced graphics design professional. My philosophy has grown simpler through the years. Good design is not about me, but about us. I want to do good work that serves the needs of my client and that I am proud to put in my portfolio. This pdf shows some of my capabilities.

**Note that all concepts and original drawings are owned by myself and my team members. The images in this document are my own and are under copyright to Rich Kurz.**

At the end of my junior year for our design lab, we were given a collaborative interdisciplinary project. We worked in teams with architectural and urban planner students to come up with ideas of what to do with a nearby elementary school. The goal was to reuse a retired school building from the turn of the century with its newer, post-WWII annex. We had to use the buildings, but other than that, we were given carte blanche.

Our team had four members. After group brainstorming, I focused on the exterior and how to connect the two buildings while facilitating foot traffic. I also attempted to create a mix of small group spaces as well as the larger playground areas. The other team members worked on the interior. It culminated with a series of presentation boards illustrating our approach. The proposals from all the teams were then delivered to the school district. I learned later after graduation that the school had been made into a magnet school for art, but I believe none of our proposals were employed.

The first three pages of this pdf show the actual school, followed by seven pages of sketched details. Then comes eight pages of illustrative views and four pages of the interior model.

Deliverables: 24"×36" blueprints shaded with markers, an interior model

I am available to discuss your design, illustration, marketing, and advertising needs.

Let's talk!



Rich Kurz



SCHOOL  
SPEED  
20

ST. LOUIS ST.





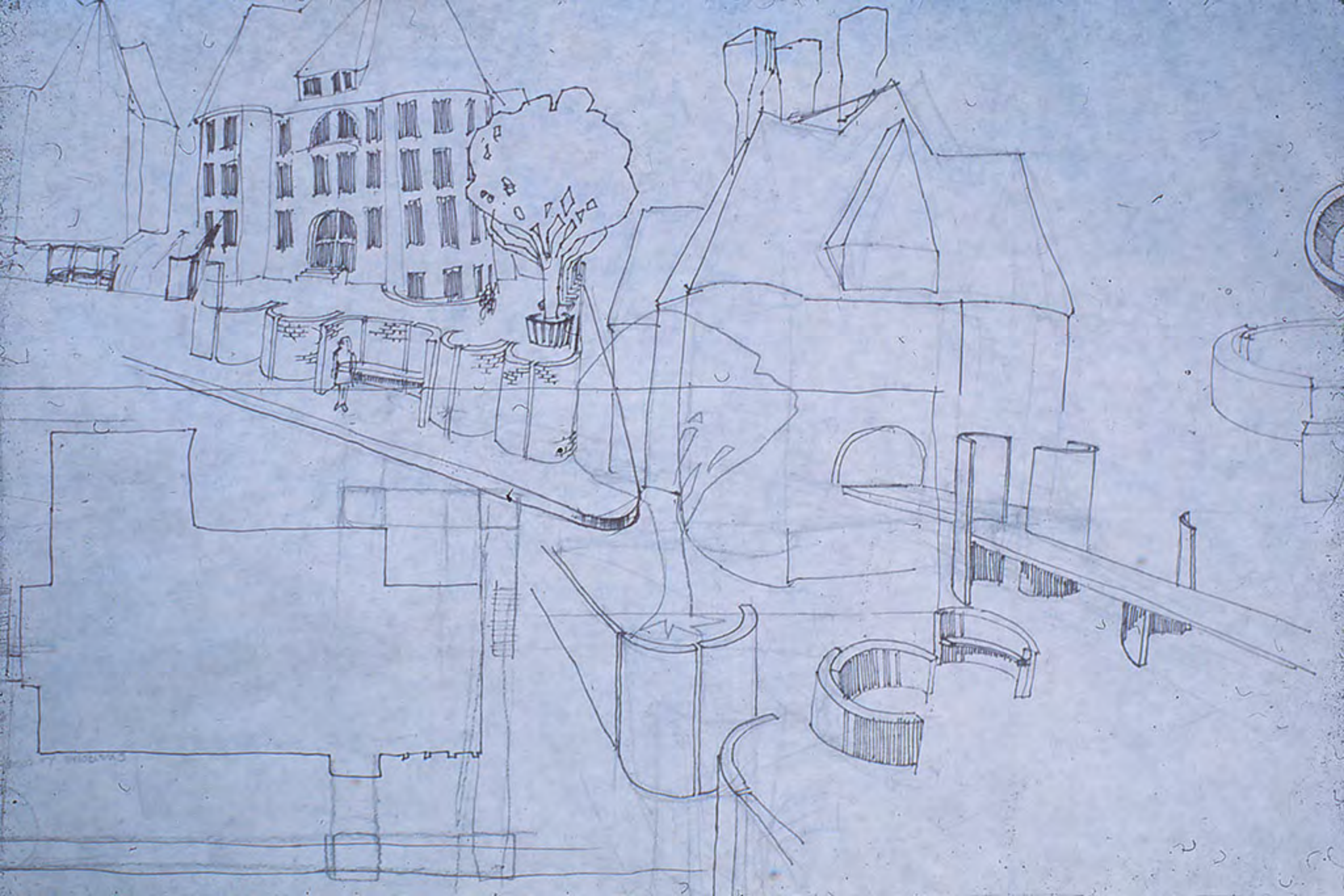
NO PARKING



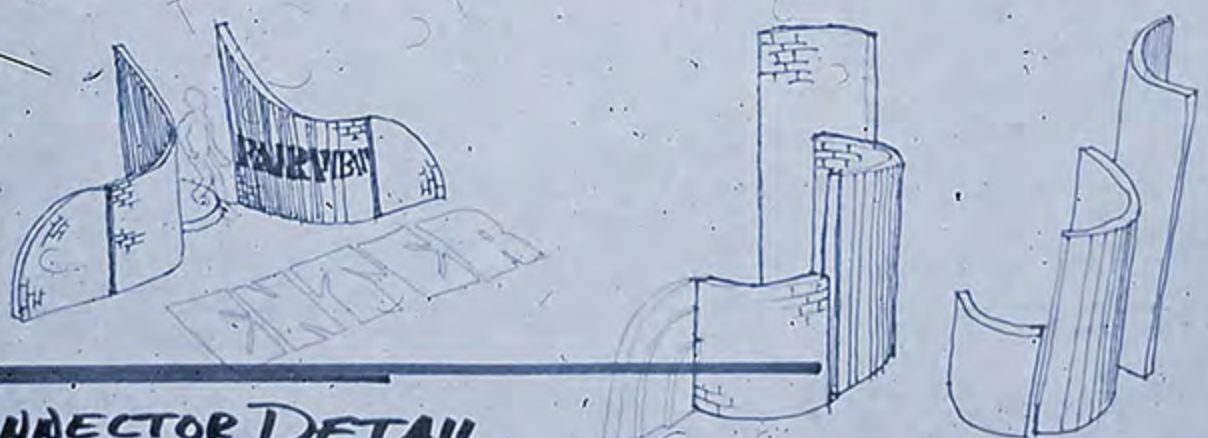
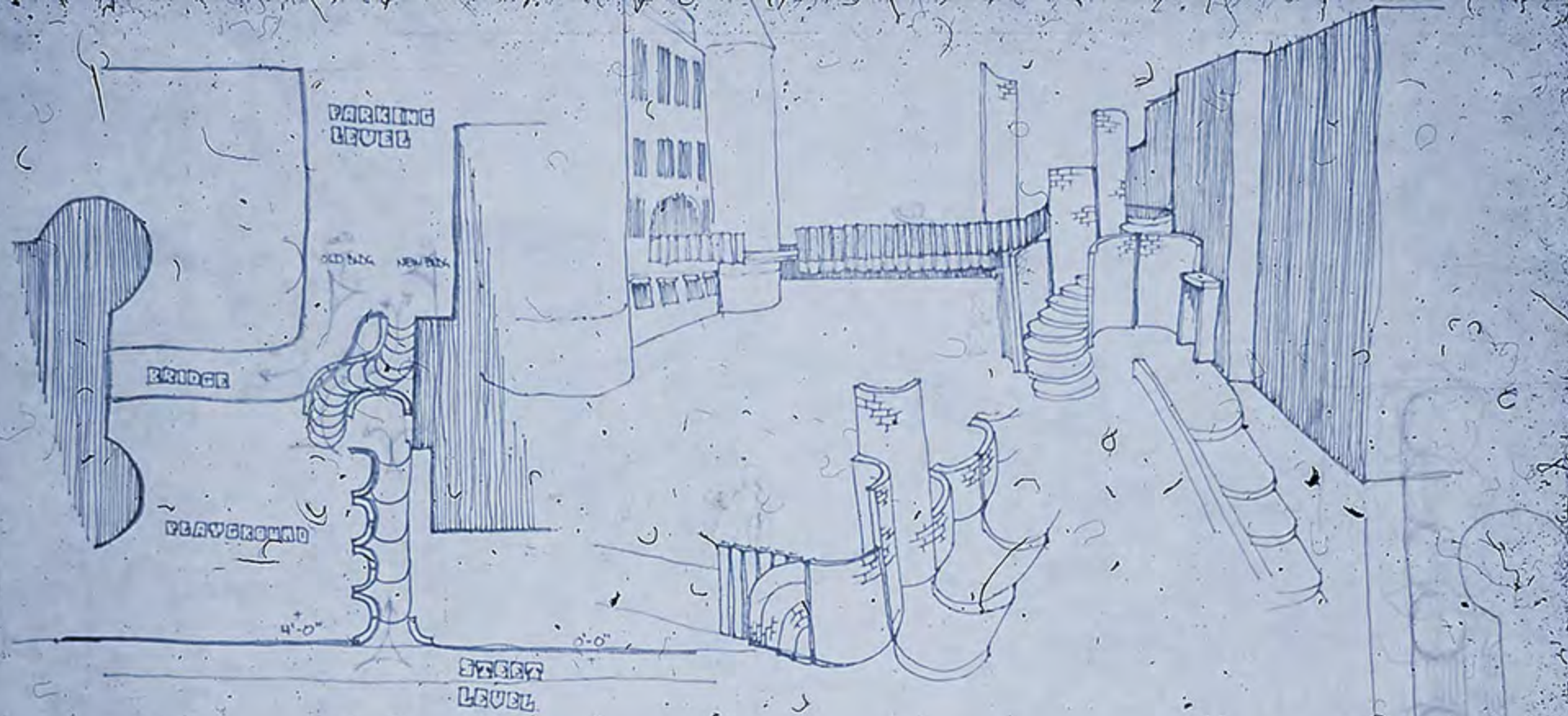


NO PARKING  
Between School Days  
↓



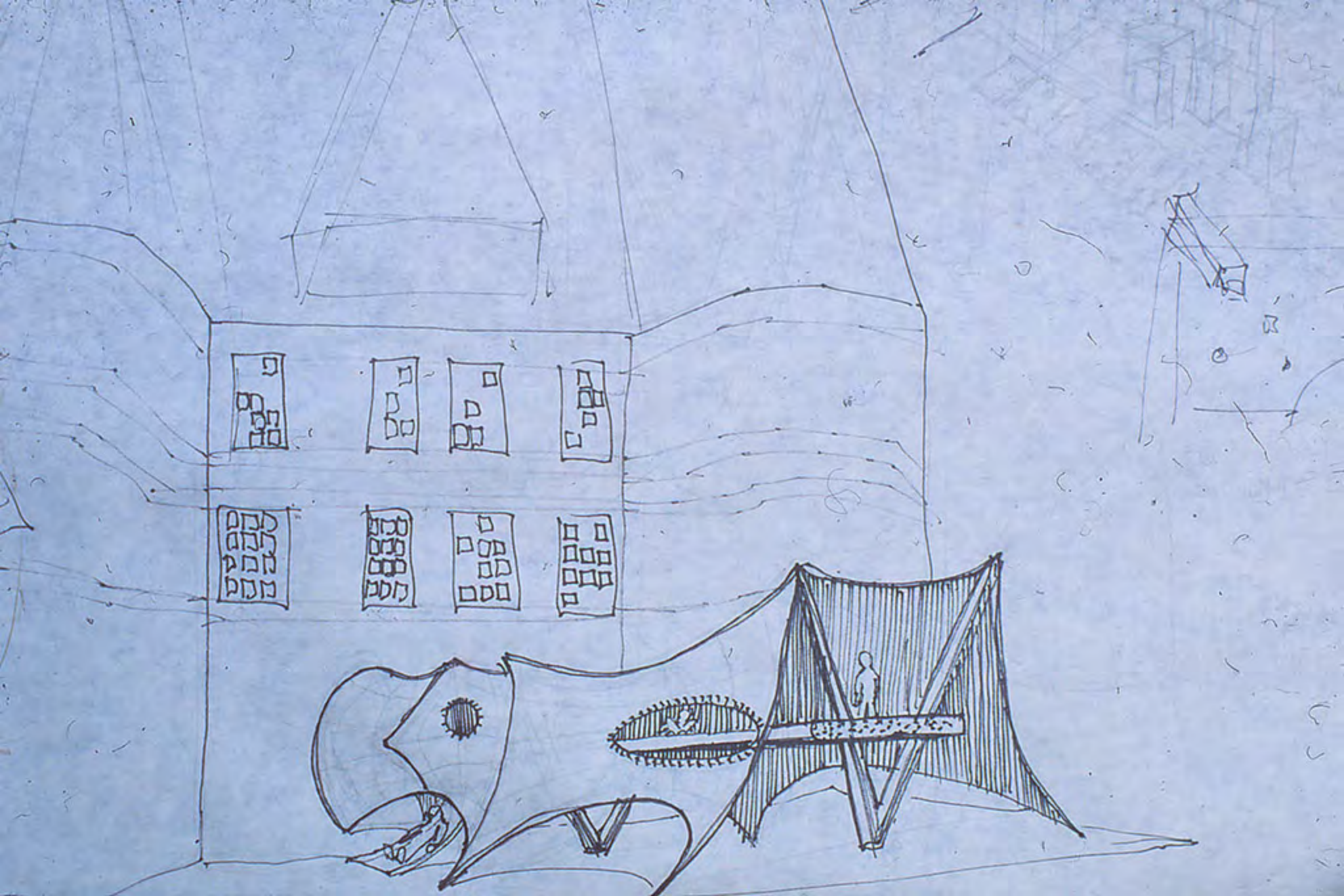






LANDSCAPE: CONNECTOR DETAIL



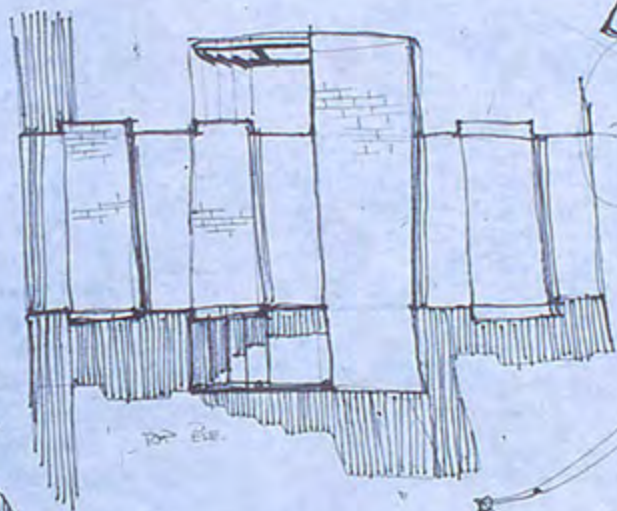
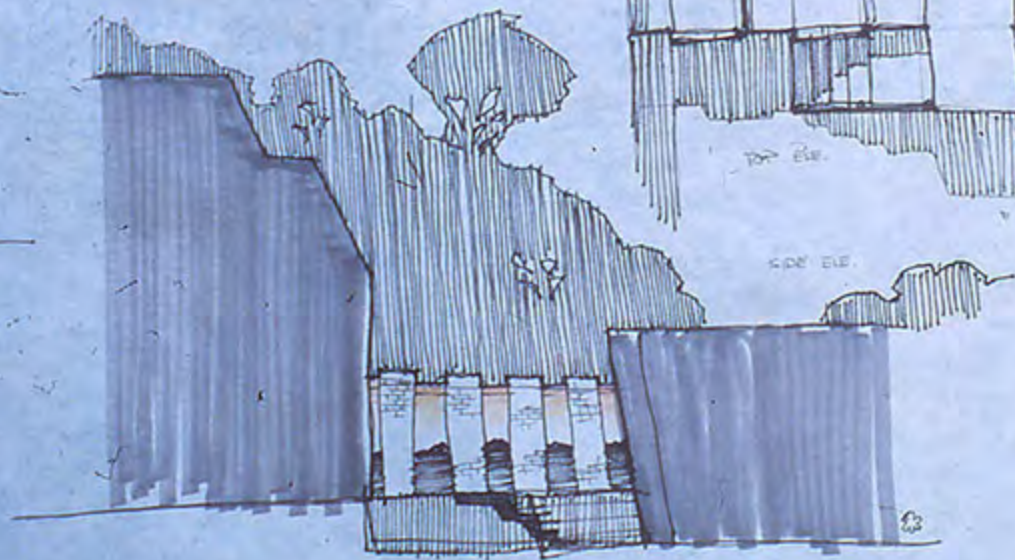




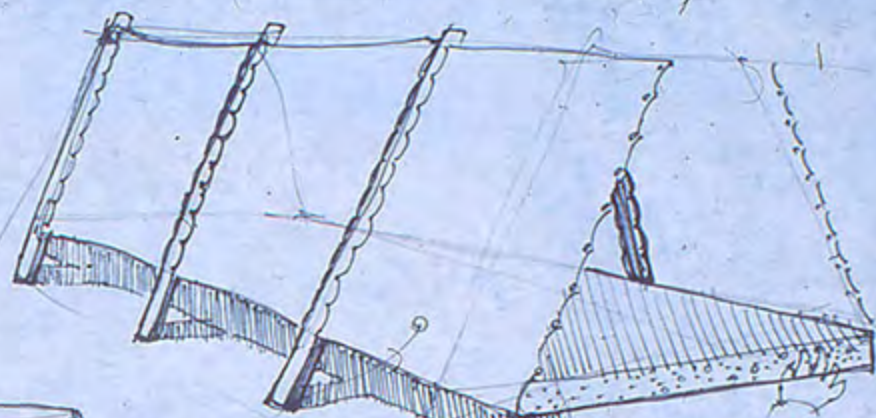
- FUNC - EXTENDED CORRIDOR  
 HOR, VERT DISTRIBUTION PATH  
 FIRE ESCAPE
- TRAFFIC FACILITATOR
  - ENV. INDICATOR, DETERMINANT
  - DRAW TWO BLDGS TOGETHER  
 OR MAINTAIN, ENHANCE DIFFERENTIATION  
 AS DES PHILO ELEMENT
  - VISIBLE OR INVISIBLE

INTER RELATE OR DIFFERENTIATE  
 EXCLUSIVE OR COMPLEMENTARY

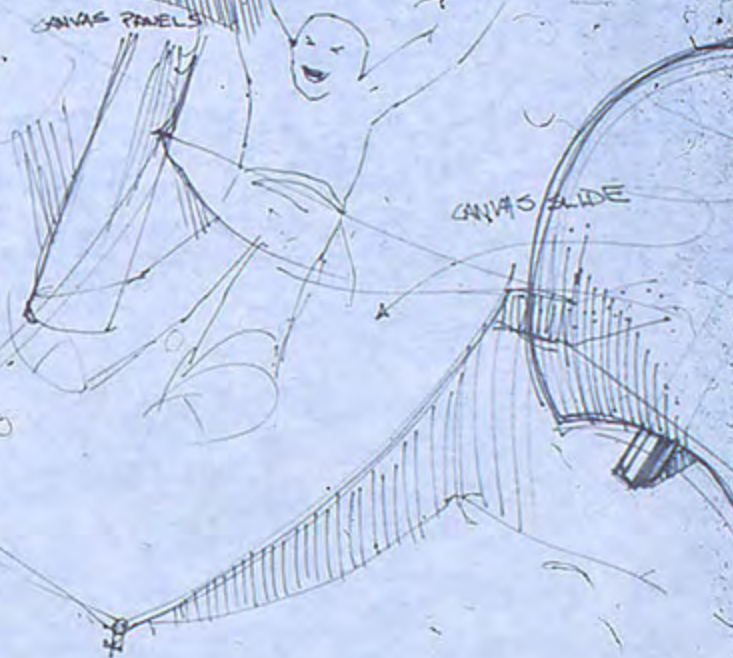
EVAL = MAKE IT FUN



SIDE ELEV.

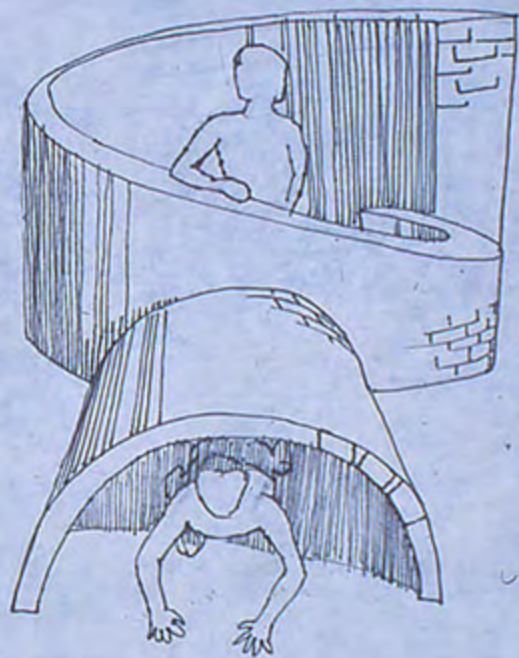
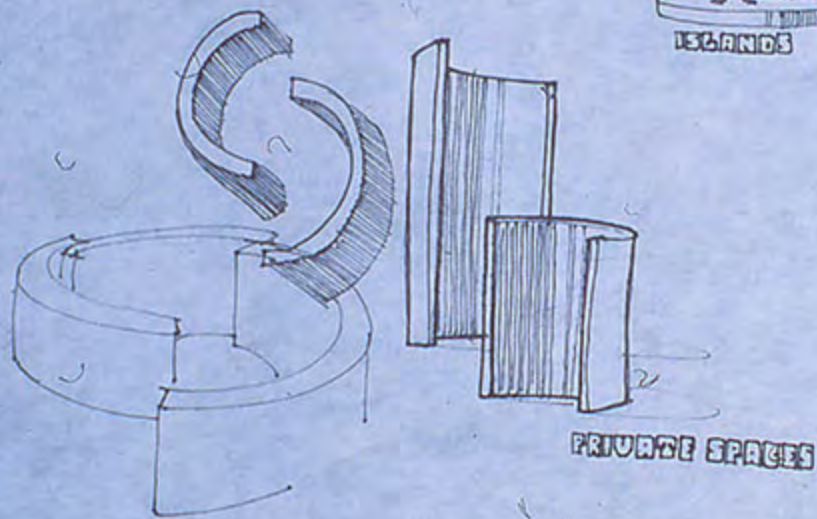


CANVAS PANELS

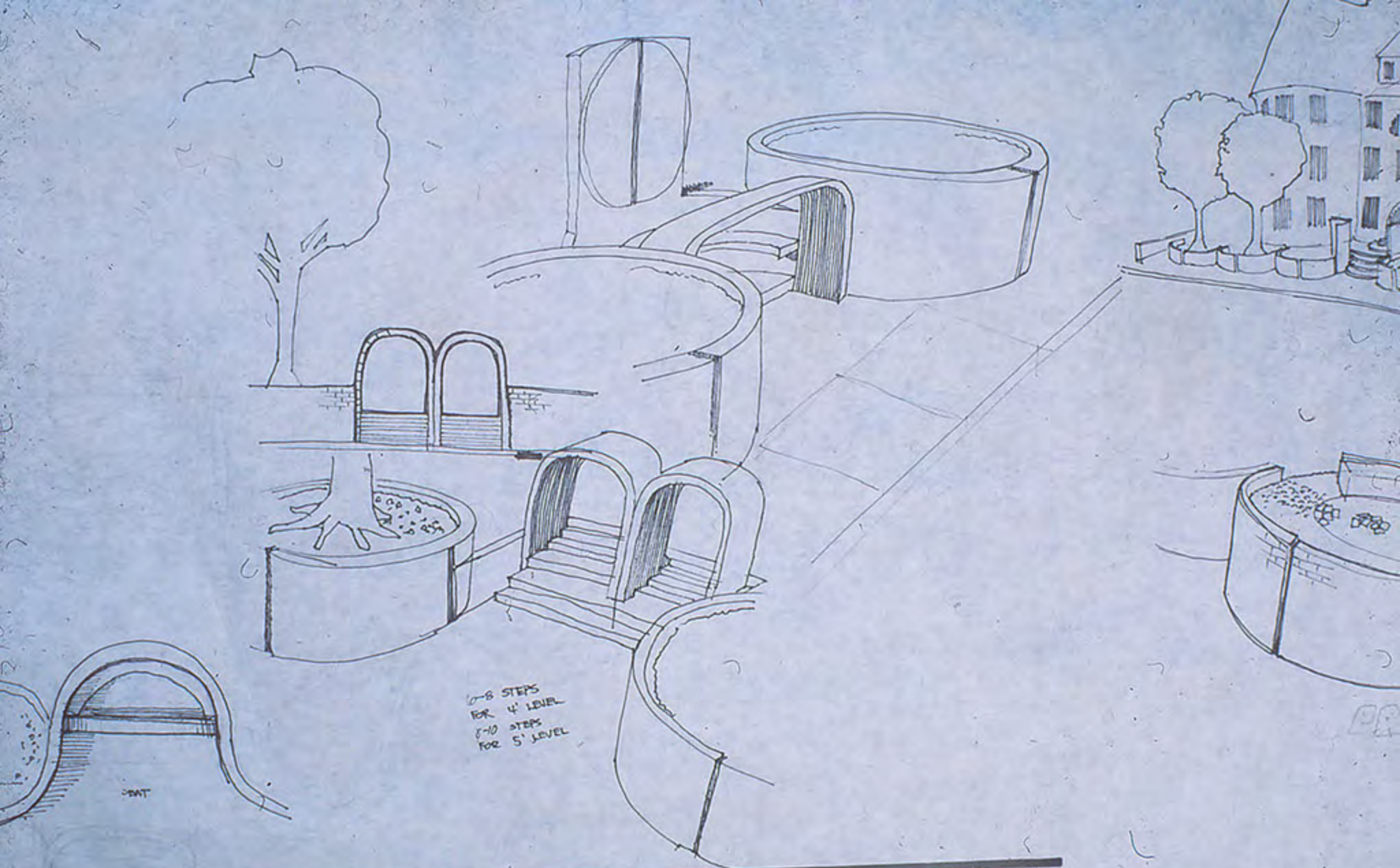


CANVAS SLIDE









6-8 STEPS  
FOR 4' LEVEL  
8-10 STEPS  
FOR 5' LEVEL

-BAT

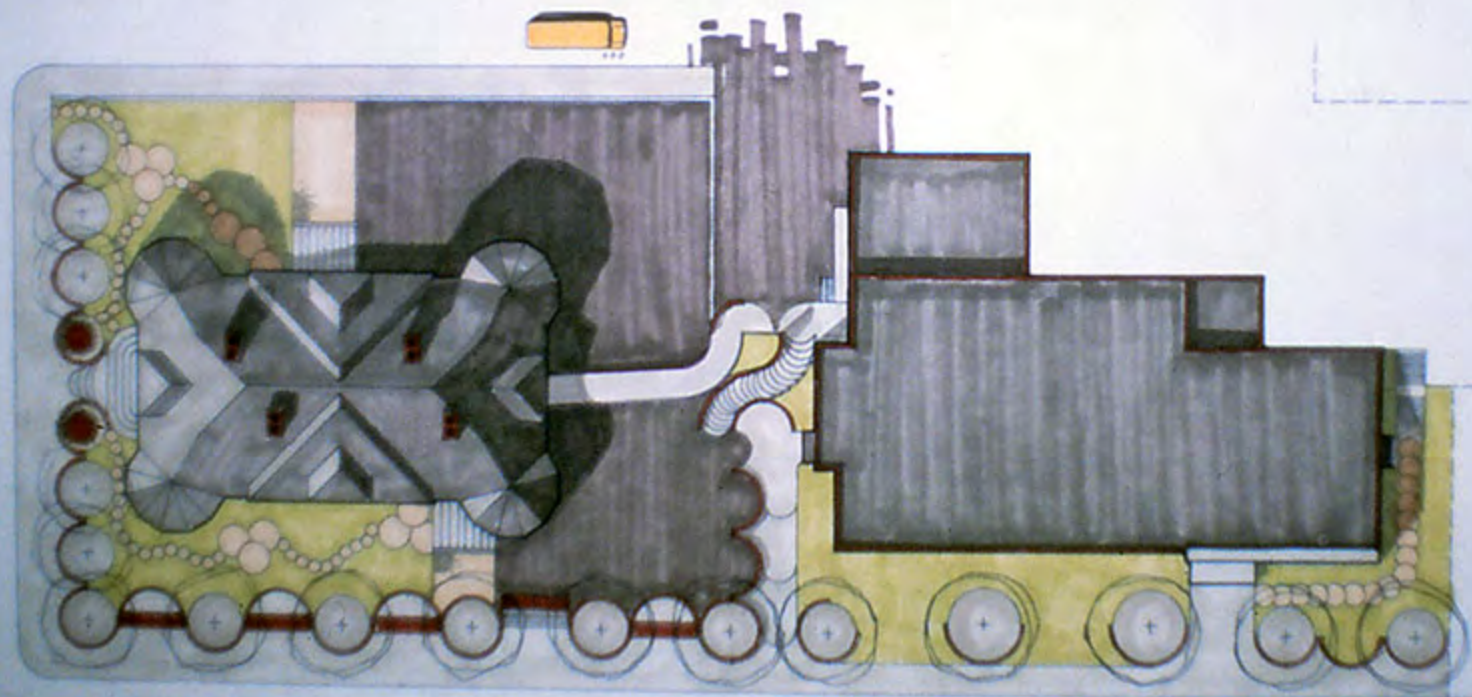
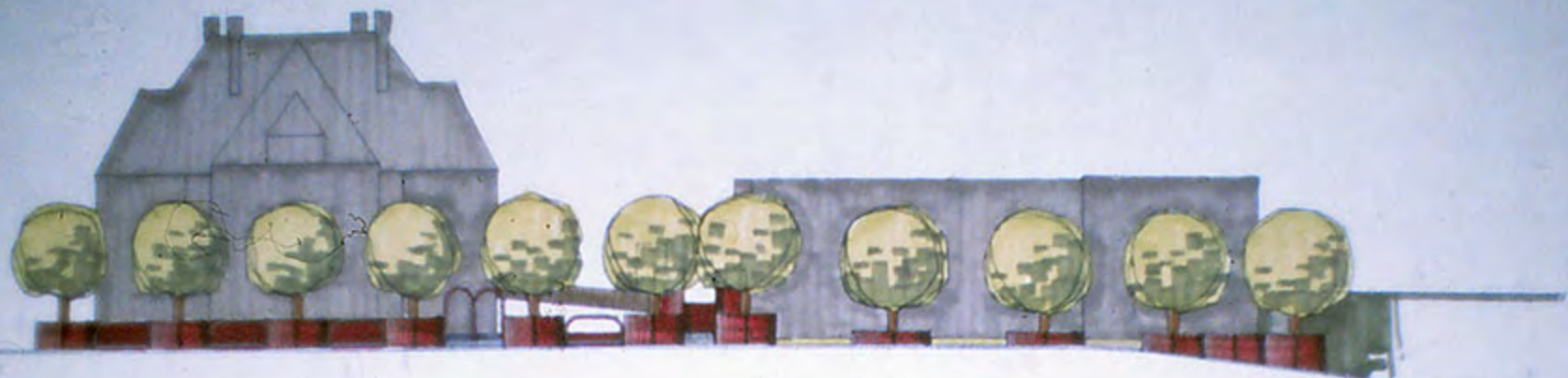
---

LANDSCAPE DETAILS:
















**WARNER**





-  level 1
-  level 2
-  level 3

